

**INSTALLATION  
USB DRIVER  
FOR  
PTC04 AND EVB**

Contents:

<b>INSTALLING THE USB DRIVER .....</b>	<b>3</b>
FIRST DRIVER.....	3
SECOND DRIVER.....	8
<b>DISCLAIMER .....</b>	<b>9</b>

## Installing the USB Driver

### First driver

- STEP 1: Connect the PTC04 With the USB Port.
- When the PTC04 programmer is plugged in the USB, Windows will ask automatically for a driver. If so, go to STEP 4.
  - If MS Windows doesn't ask for a driver, go to the control panel of windows and select "System". Continue with STEP2

STEP 2: In the window System Properties select "Device Manager"

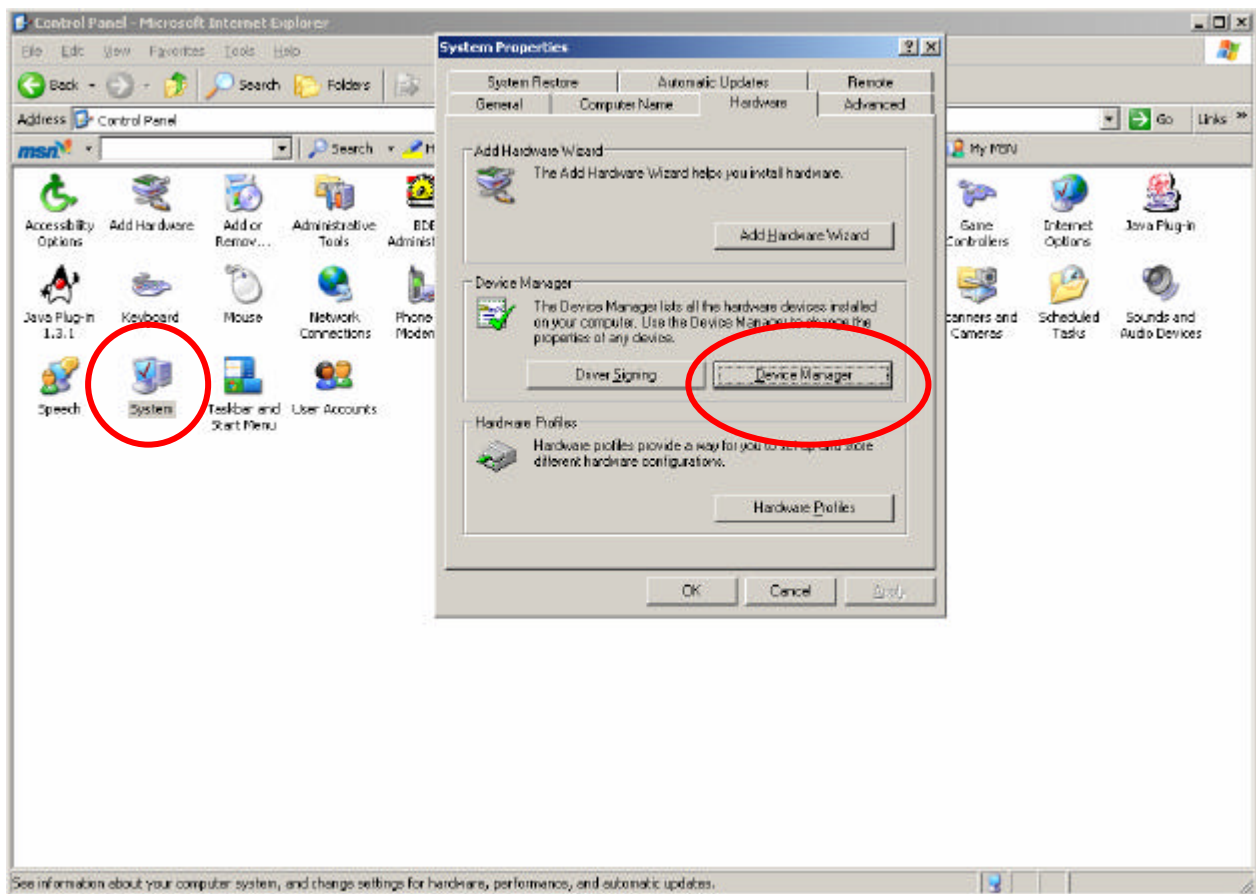


Figure 1: Control Panel - System - Device Manager.

STEP 3: Go to the Universal Serial Bus controllers at the bottom of the Device Manager window. Click with the right mouse button on the USB port with the exclamation mark "Melexis PTC04 universal programmer". Select "update driver".

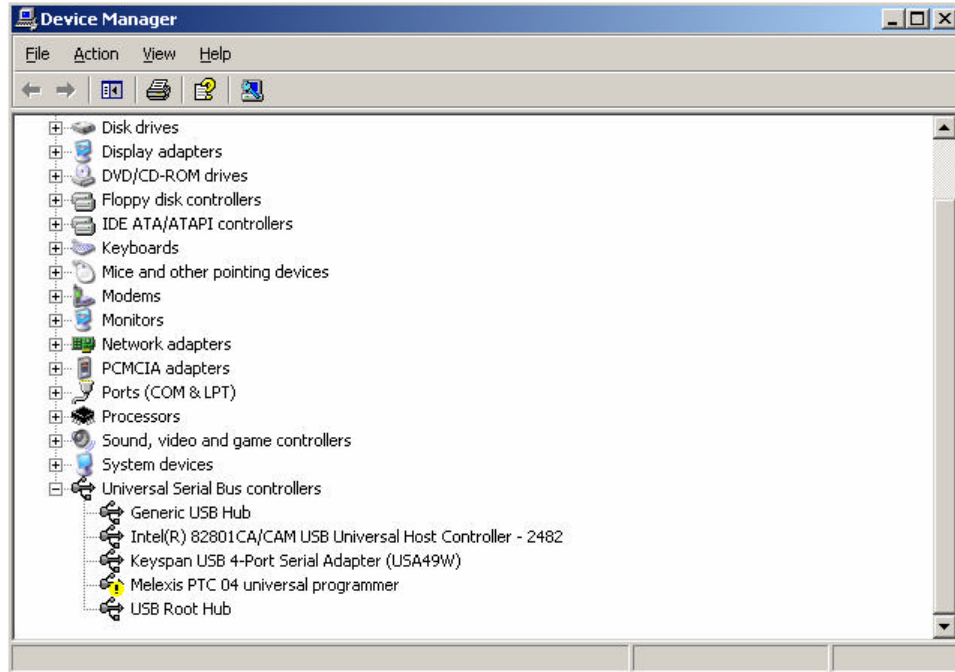


Figure 2: Device Manager. STEP3

STEP 4: Select "Install from a list or specific location" In the Hardware Update Wizard. Next >

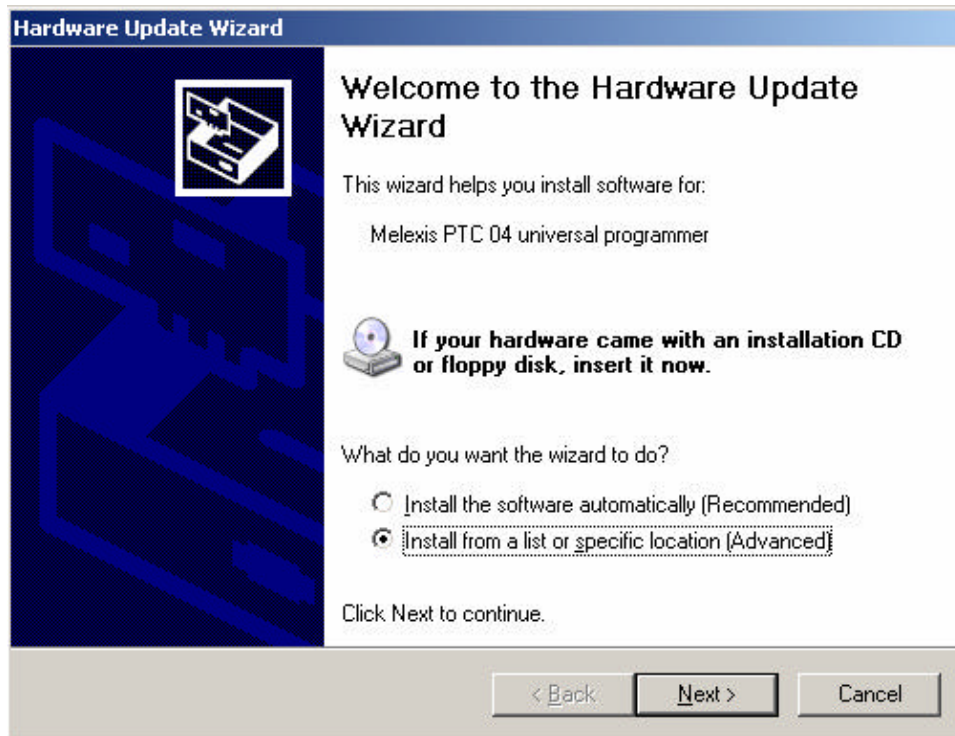


Figure 3: STEP4

STEP 5: Select "Don't search. I will choose the driver to install". Next >

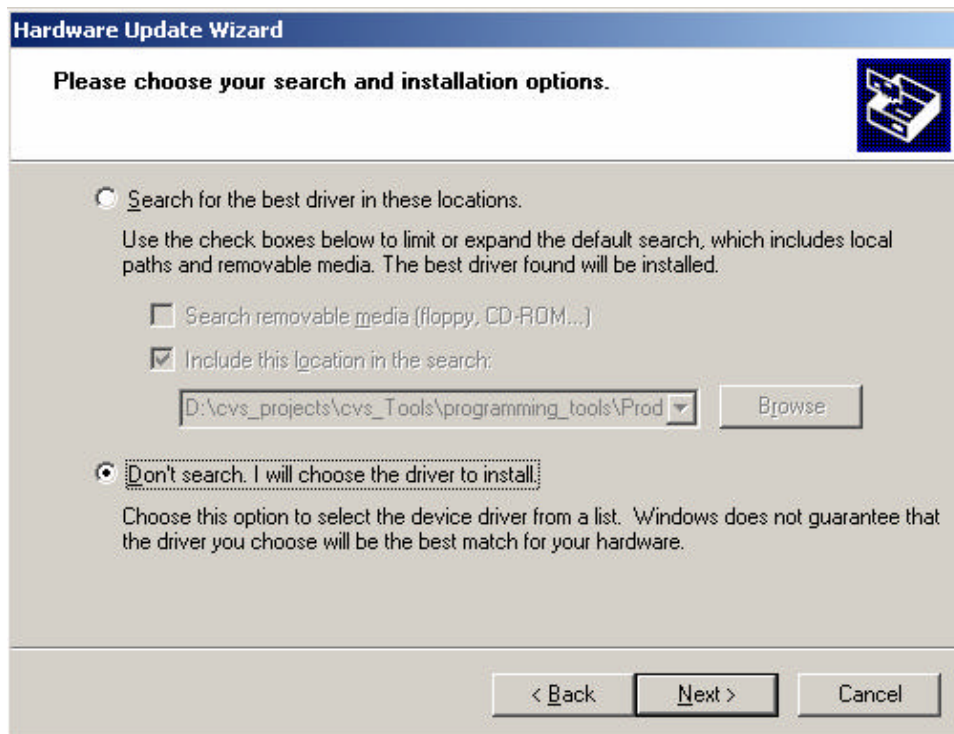


Figure 4: STEP5

STEP 6: Press "Have Disk"

STEP 7: Browse...

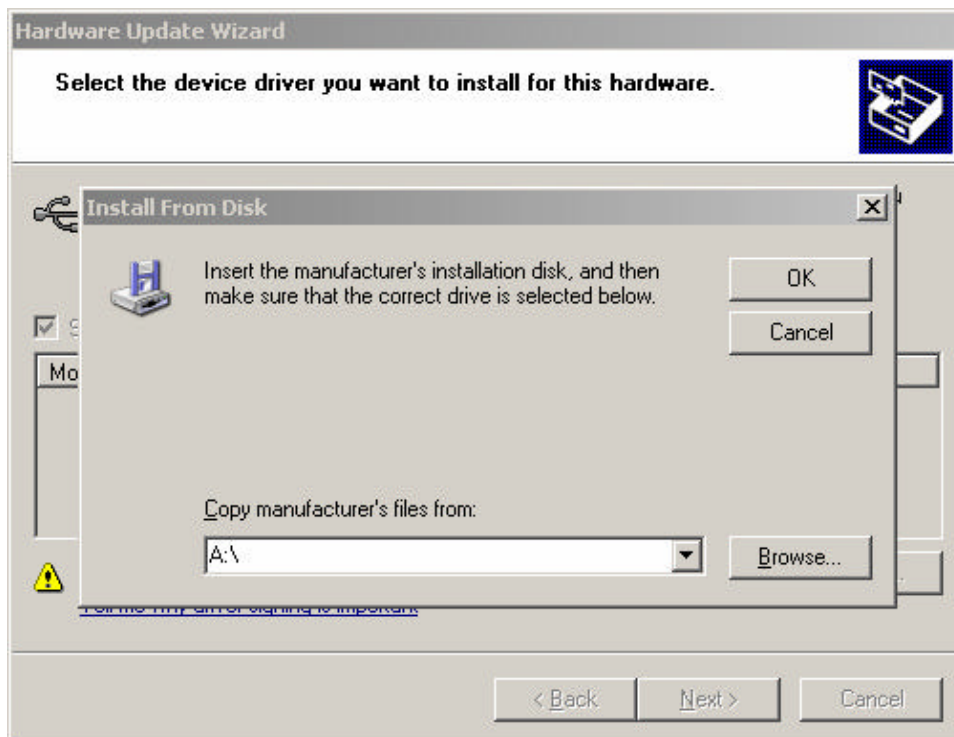


Figure 5: STEP6-7

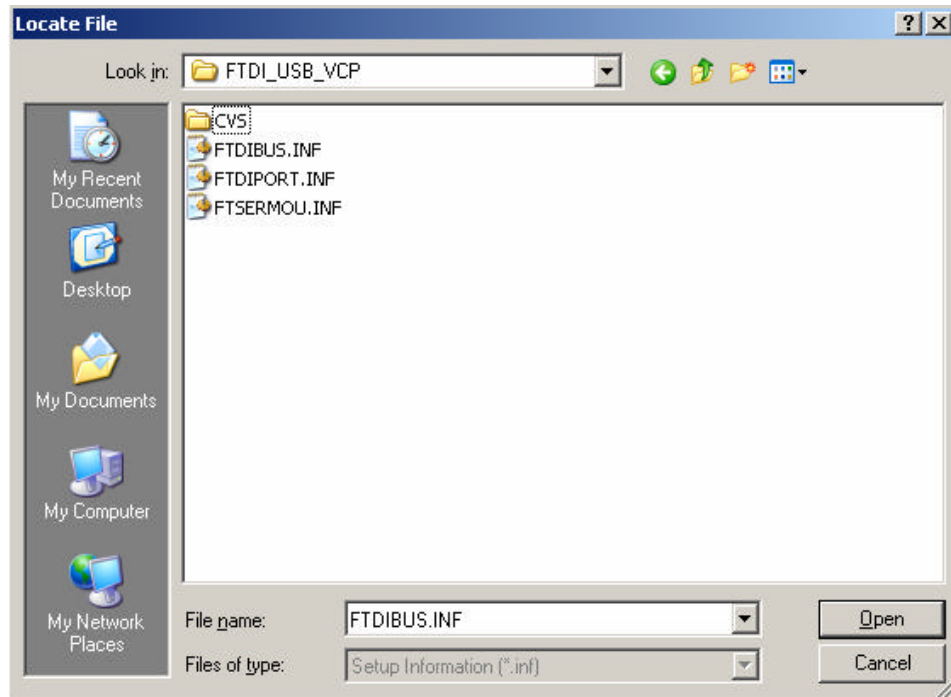


Figure 6: STEP8

STEP 8: Go to ..:\CD\_PTC04\PTC04\USB\_Driver\FTDI\_USB\_VCP and select FTDIBUS.INF. Press "Open".

STEP 9: Press "OK"

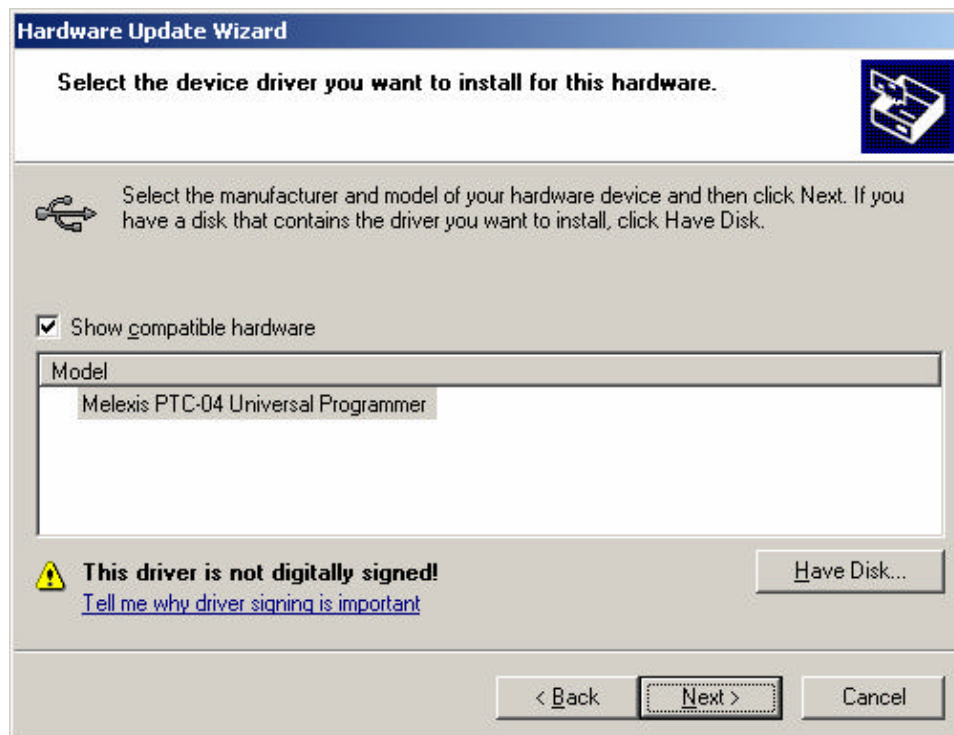


Figure 7: STEP9-10

STEP 10: Next >

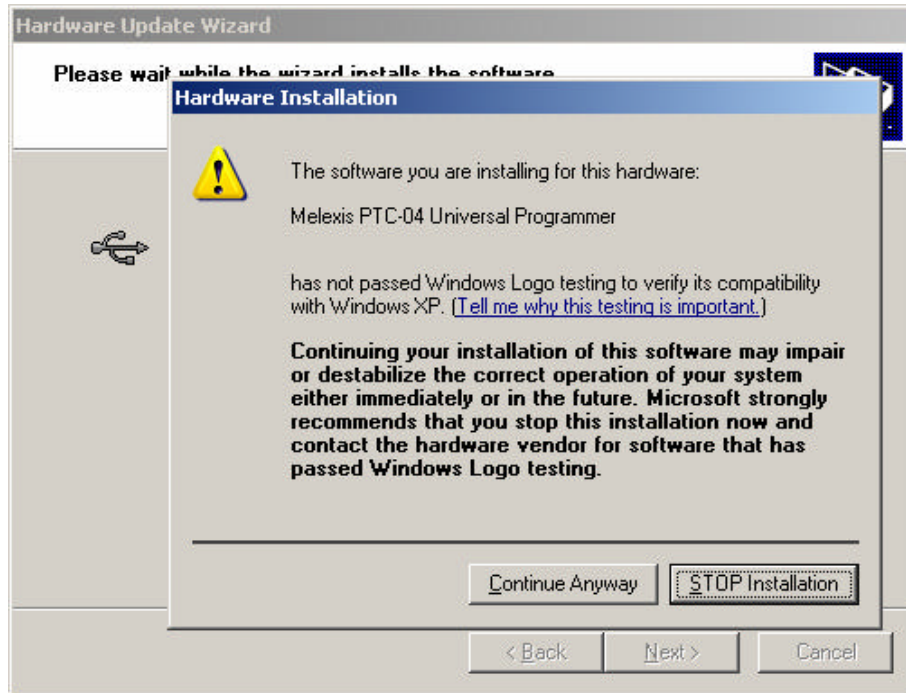


Figure 8: STEP11

STEP 11: If this message is shown press "Continue Anyway"

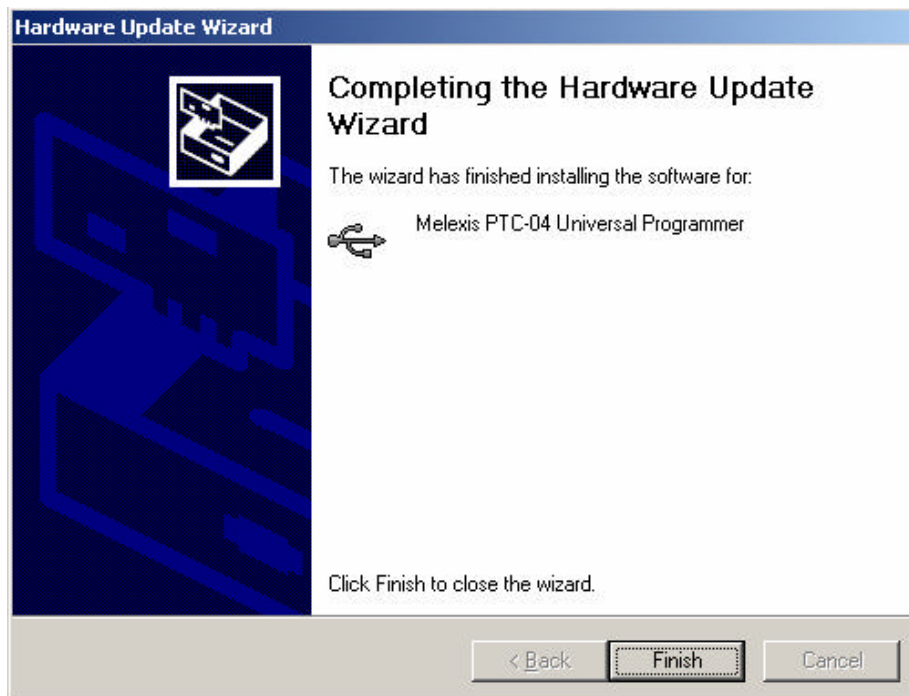


Figure 9: STEP12

STEP 12: Finish...

## Second driver

STEP 13: After the USB driver is installed. A second USB ? Serial driver is installed automatically. Also for this Windows will request a driver.

- a. If so, go to STEP 4. The installation procedure is identical to the first driver.
- b. If MS Windows doesn't ask for a driver, go to the control panel of windows and select "System". Continue with STEP14

STEP 14: In the window System Properties select "Device Manager"

STEP 15: Go to the Ports (COM & LPT) in the middle of the Device Manager window. Click with the right mouse button on the USB port with the exclamation mark "Melexis PTC04 USB Serial Port". Select "update driver".

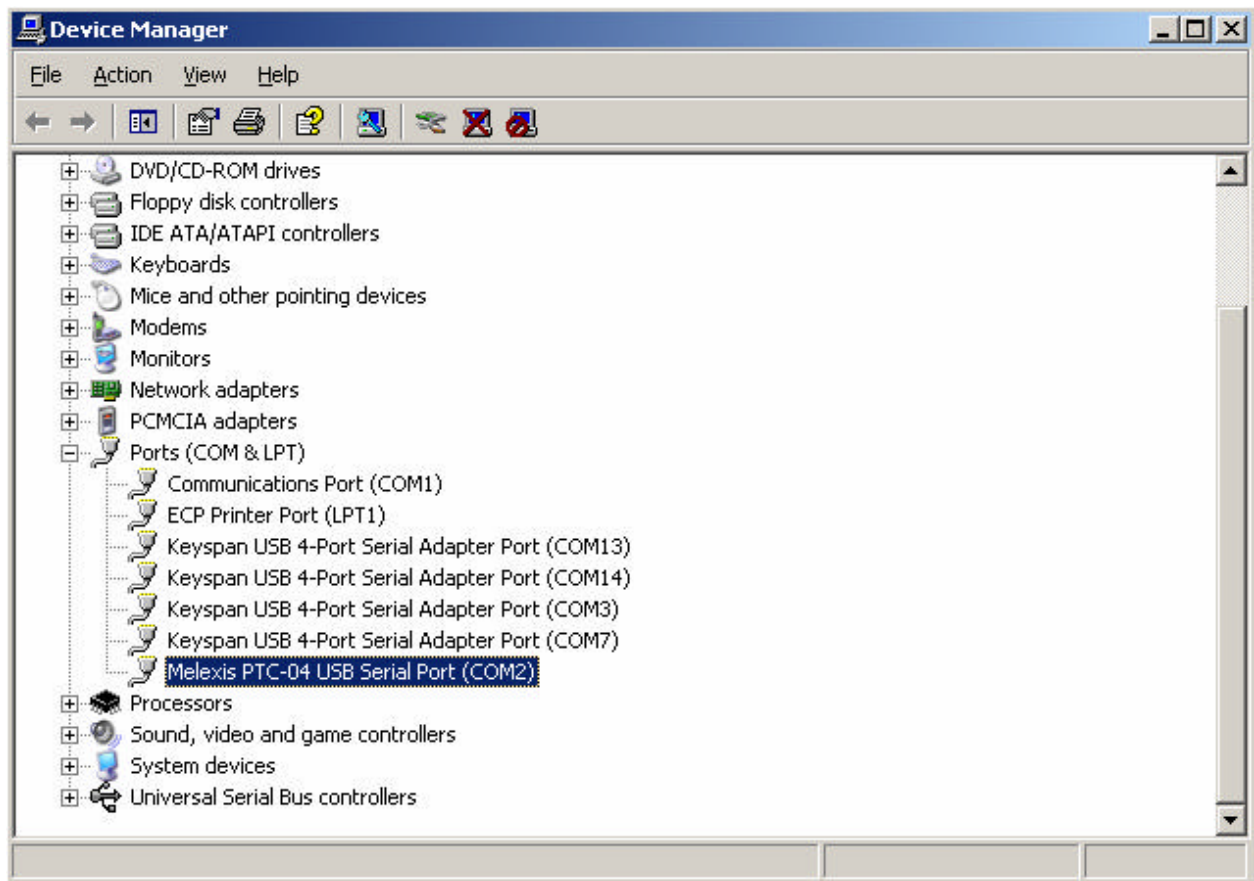


Figure 10:STEP15

STEP 16: The rest of the procedure is identical to the first driver. Got to step 4.

### Disclaimer

Devices sold by Melexis are covered by the warranty and patent indemnification provisions appearing in its Term of Sale. Melexis makes no warranty, express, statutory, implied, or by description regarding the information set forth herein or regarding the freedom of the described devices from patent infringement. Melexis reserves the right to change specifications and prices at any time and without notice. Therefore, prior to designing this product into a system, it is necessary to check with Melexis for current information. This product is intended for use in normal commercial applications. Applications requiring extended temperature range, unusual environmental requirements, or high reliability applications, such as military, medical life-support or life-sustaining equipment are specifically not recommended without additional processing by Melexis for each application.

The information furnished by Melexis is believed to be correct and accurate. However, Melexis shall not be liable to recipient or any third party for any damages, including but not limited to personal injury, property damage, loss of profits, loss of use, interrupt of business or indirect, special incidental or consequential damages, of any kind, in connection with or arising out of the furnishing, performance or use of the technical data herein. No obligation or liability to recipient or any third party shall arise or flow out of Melexis' rendering of technical or other services.

© 2004 Melexis NV. All rights reserved.

website at:

**[www.melexis.com](http://www.melexis.com)**

Or for additional information contact Melexis Direct:

Europe and Japan:

Phone: +32 13 67 04 95

E-mail: [sales\\_europe@melexis.com](mailto:sales_europe@melexis.com)

All other locations:

Phone: +1 603 223 2362

E-mail: [sales\\_usa@melexis.com](mailto:sales_usa@melexis.com)

QS9000, VDA6.1 and ISO14001 Certified